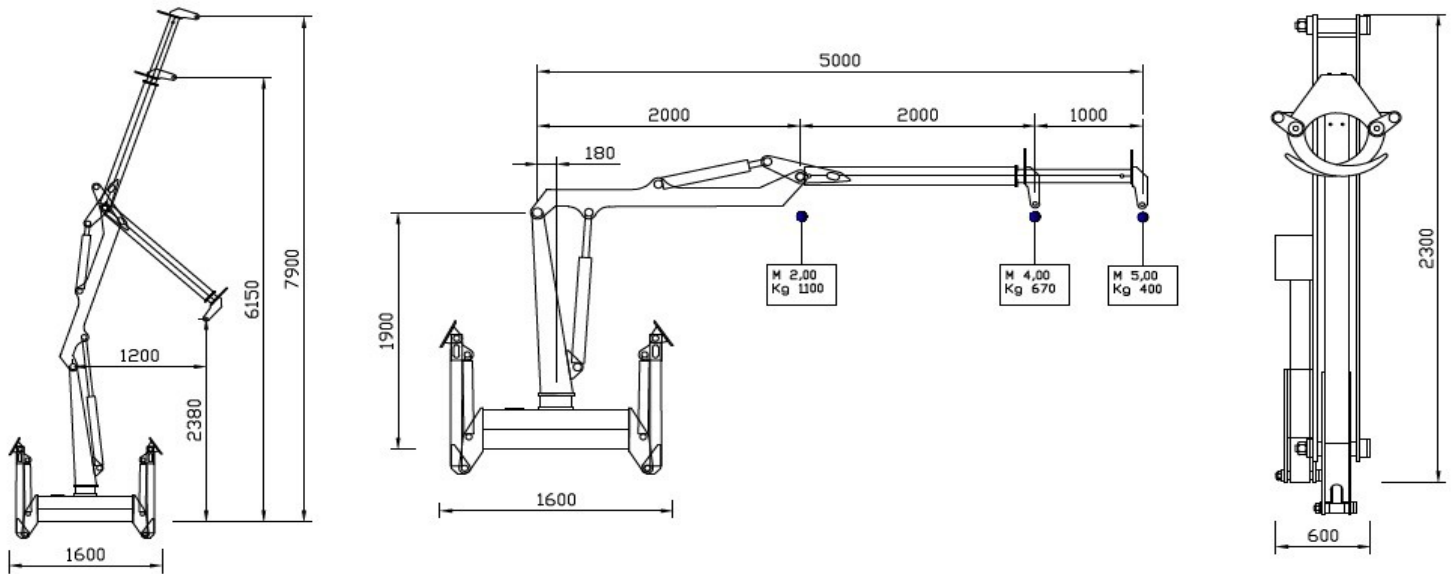










# XFORST XF 500 Z



|  |   |   |   |   |   |   |   |
|--|---|---|---|---|---|---|---|
|  |  |  |  |  |  |  |  |
| 5.00 mt  | 2   | 25 KNm  | 400 kg  | 20°   | 400°  | 35 lt/min   | 900 kg  |

## ACCESSORI DI SERIE:

- STABILIZZATORI IDRAULICI COMANDATI SINGOLARMENTE
- DISTRIBUTORE IDRAULICO A DUE CLOCHE E QUATTRO LEVE
- SISTEMA DI ATTACCO PER CARRO FORESTALE O AL SOLLEVATORE (SPECIFICARE NELL'ORDINE)
- BRACCIO TERMINALE TELESCOPICO, CHIUSURA DEL BRACCIO A "Z"
- POSTO DI GUIDA IN ALTO CON SEDILE O COMANDI BASSI A TERRA (SPECIFICARE NELL'ORDINE)
- SERBATOIO DELL'OLIO INCORPORATO NELLA BASE
- VALVOLA DI BLOCCO SUI CILINDRI DI SOLLEVAMENTO
- TUBI OLEODINAMICI RICOPERTI DA GUAINA ANTIUSURA.

